



495 / I-95 North
to Baltimore

East Capitol St. to
Washington, DC



495 / I-95 South to
Woodrow Wilson
Bridge-Richmond

From Maryland (Montgomery County & Howard County):

- Take 495 Inner Loop (past College Park)
- Take Exit **17B** Landover Road/202
- Take first left onto Brightseat (Redskin Road)
- Turn slight right onto FedEx Way, continue to **Parking Lot A** (entrance is located off Garrett Morgan Blvd)

From Baltimore:

- Take I-95 South to 495 South towards Richmond
- Follow Maryland directions (listed above) starting with Exit **17B**
- OR**
- Take 295 South/Baltimore-Washington Pkwy 495 South
- Follow Maryland directions (listed above) starting with Exit **17B**

From Washington DC:

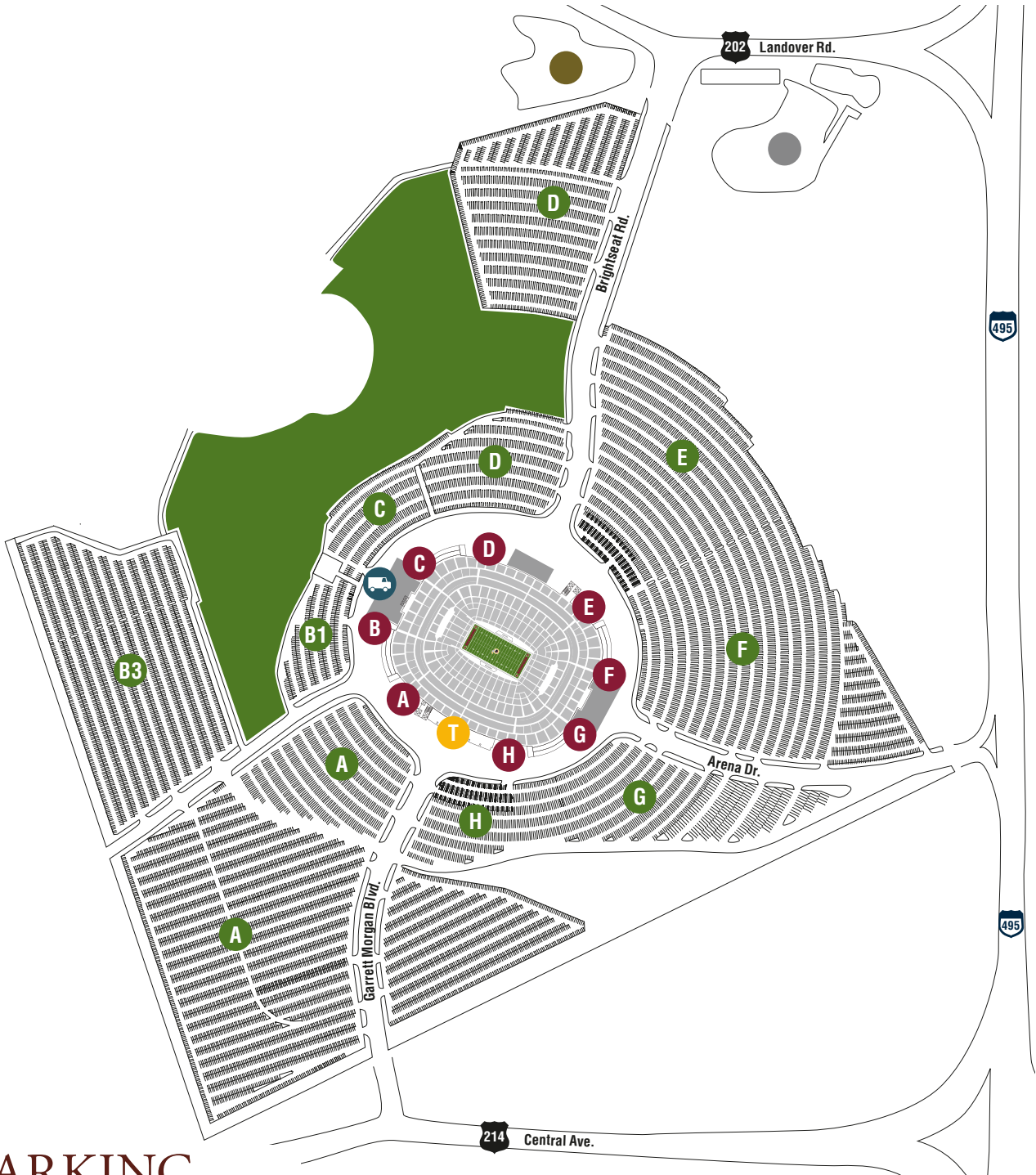
- Take East Capitol St. (it turns into Central Ave. East)
- Turn Left onto Garrett A. Morgan Blvd.
- As you approach the stadium, the entrance to **Parking Lot A** will be on your left.
- OR**
- Take New York Ave. to 50 East
- Bear right off Exit **3B** (S. Landover Road/202)
- Turn Right onto Brightseat Road/Redskins Road
- Turn slight right onto FedEx Way, continue to **Parking Lot A** (entrance for is located off Garrett Morgan Blvd)

From Northern Virginia:

- Take 495 E / I-95 North to Exit **15** Central Avenue/214-West
- Turn right onto Garrett A. Morgan Blvd
- As you approach the stadium, the entrance to **Parking Lot A** will be on your left.

Complimentary guest parking is available in PARKING LOT A
Please enter the stadium at the **TICKET OFFICE/SUITE ENTRANCE**
(Directly across the street from Parking Lot A)

Redskins
SPECIAL EVENTS
AT FEDEXFIELD



PARKING

A Lot A	C Lot C	F Lot F	Copper Lot	B Gate B	E Gate E	H Gate H
B1 Lot B1	D Lot D	G Lot G	Gray Lot	C Gate C	F Gate F	T Ticket Office
B3 Lot B3	E Lot E	H Lot H	A Gate A	D Gate D	G Gate G	LD Loading Dock